

How will I find my way around the school? STAGE 3

Frequently Asked Questions

A map of the school has been sent to you in the post* and we will use this now to help you see where the main areas, faculties and rooms are in the school. Sometimes you may be taught in a room that is not directly in the faculty area but do not worry about this. Hopefully the next tasks will help you find where all the rooms are.

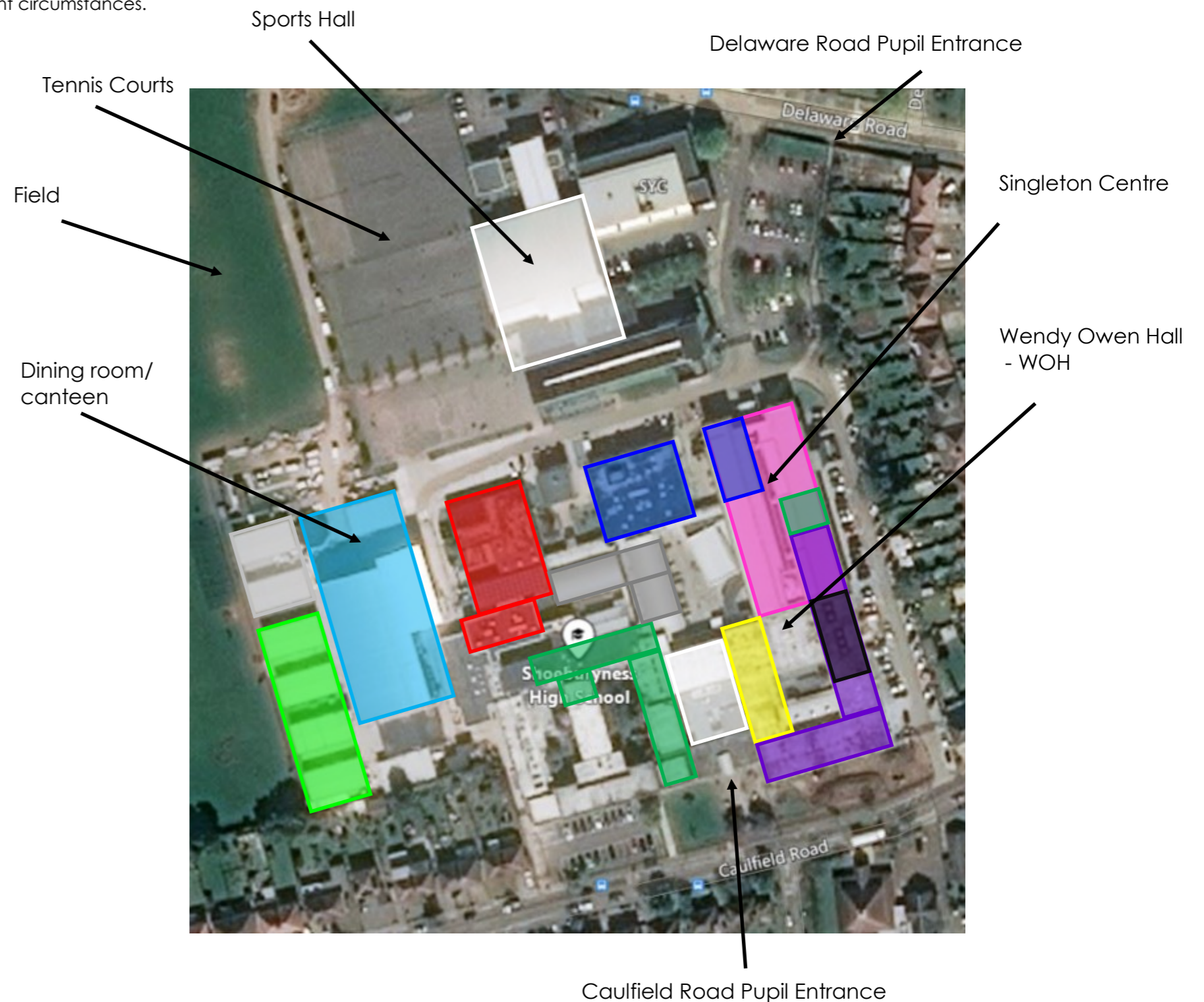
*Information was posted on the 9th June. Please allow extra time for it to arrive in the current circumstances.

You have four periods a day and these will usually be taught in different rooms.

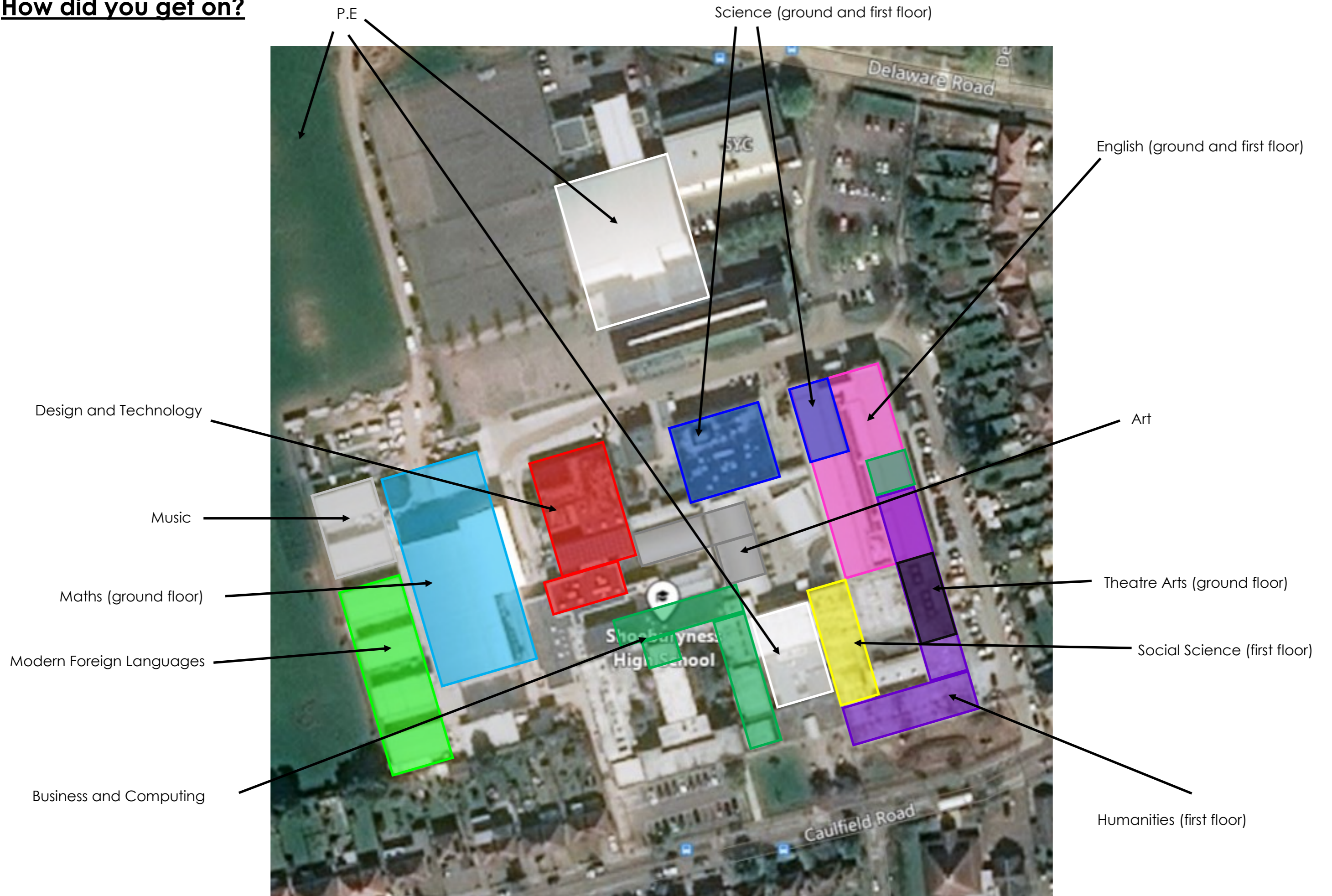
The basic map of the school to the right shows where faculties are so that you can become familiar with the school's layout. This will help in planning your day so that you are in the right place for every lesson.

We have also labelled the main areas in the school so that when you look at the map we have sent you, you can find where these are as a starting point.

By looking at the faculty colours, can you already start to identify where they are in the school?



How did you get on?



Rooms.

This is probably going to be one of the major differences when you come to Shoeburyness High School. In your primary school, you will be used to being taught in one or two rooms but you can see how many different rooms we have.

Again, do not worry. When you first arrive, as long as you find yourself in the faculty area, the rooms are very close to each other and you will find your way.

Also remember that there is a break and lunch between lessons. This will give you time to move around the school but also there will be plenty of teachers and senior prefects on duty who can help you find your way.

A1 - Art Room 1
A2 - Art Room 2
A3 - Art Room 3
A4 - Art Room 4

MU1 - Music
MU2 - Music
MU3 - Music
MU4 - Music
MU5 - Music

Studio 1 - Theatre Arts
Studio 2 - Theatre Arts
Studio 3 - Theatre Arts

BS1 - Business
BS2 - Business and Computing
BS3 - Business and Computing
G10 - Business and Computing
G11 - Business and Computing
IT1 - Business and Computing
IT2 - Business and Computing
IT3 - Business and Computing

T1 - Design and Technology
T2 - Design and Technology
T4 - Design and Technology
T5 - Design and Technology
T6 - Design and Technology
T7 - Design and Technology
T8 - Design and Technology
T9 - Design and Technology
T10 - Design and Technology
T11 - Design and Technology

F1 - English
F2 - English
F3 - English
F4 - English
F5 - English
F6 - English
F9 - English
F10 - English
F11 - English
G1 - English
G7 - English
G8 - English
G9 - English
G12 - English
G13 - English

M01 - Maths
M02 - Maths
M03 - Maths
M04 - Maths
M05 - Maths
M06 - Maths
M07 - Maths
M08 - Maths
M09 - Maths
M10 - Maths
M11 - Maths
M12 - Maths

S1 - Science
S2 - Science
S4 - Science
S5 - Science
S11 - Science
S12 - Science
S13 - Science
S14 - Science
S15 - Science
S16 - Science
G3 - Science
G4 - Science

SE1 - Social Science
SE2 - Social Science
SE3 - Social Science
SE4 - Social Science
SE5 - Social Science
SE6 - Social Science
SE7 - Social Science

F12 - Humanities
F13 - Humanities
F14 - Humanities
F15 - Humanities
H10 - Humanities
H11 - Humanities
H12 - Humanities
H14 - Humanities
H16 - Humanities
H17 - Humanities
H18 - Humanities
H19 - Humanities
H20 - Humanities

L01 - Modern Foreign Languages
L02 - Modern Foreign Languages
L03 - Modern Foreign Languages
L04 - Modern Foreign Languages
L05 - Modern Foreign Languages
L06 - Modern Foreign Languages
L07 - Modern Foreign Languages
L08 - Modern Foreign Languages
L09 - Modern Foreign Languages

Transition Tasters

Using the map we have sent you, start to colour in the different rooms. This will definitely help you finding your way around the school.

We also have these maps on display around the school, so by completing this task you already have a head start.

Toilets

It is also worth noting where the toilets are. As toilets are available during break and lunch, we have separated them into different key stages.

Lower school toilets are used by **Key Stage 3 students** (year 7, 8 and 9) and are **by the Wendy Owen Hall**. Look on your map and find WOH and you will see the toilets opposite.

Upper school toilets are used by Key Stage 4 students (year 10 and 11) and are between T5 and the LSA office.

Sixth Form toilets are used by Key Stage 5 students (year 12 and 13) and are on the first floor between H20 and F15.

Shoeburyness High School

Transition Timetables

Can you now use the timetable to find the rooms?

Using the timetables you have previously looked at in 'finding your way around the school' and 'how your day is structured', try to find the rooms in which you would be taught.

Week A

	MonA	TueA	WedA	ThuA	FriA
1	79G Period 1 FXO F06	79G Period 1 FXO F06	79G Period 1 FXO F06	79G Period 1 FXO F06	79G Period 1 FXO F06
2A	7n/Sc4 Science HN S15	7n/Pe1 P.E. BB SP1	7n/Sc4 Science HN S15	7n/Hi4 History RB F12	7n/It4 Information Tech GHJ G11
2B	7n/Sc4 Science HN S15	7n/Pe1 P.E. BB SP1	7n/Sc4 Science HN S15	7n/Hi4 History RB F12	7n/It4 Information Tech GHJ G11
3A	7n/Es4 Espanol SAG L09	7n/En4 English AP F02	7n/Se4 S.C.O.P.E. EXR SE7	7n/En4 English AP F02	7n/Te1a Design & Tech SXB T01
3B	7n/Es4 Espanol SAG L09	7n/En4 English AP F02	7n/Se4 S.C.O.P.E. EXR SE7	7n/En4 English AP F02	7n/Te1a Design & Tech SXB T01
4A	7n/Ma4 Mathematics CD M06	7n/Gg4 Geography RF H11	7n/Ma4 Mathematics CD M06	7n/Fr4 French DE L04	7n/Pa4 Per Arts EH ST2
4B	7n/Ma4 Mathematics CD M06	7n/Gg4 Geography RF H11	7n/Ma4 Mathematics CD M06	7n/Fr4 French DE L04	7n/Pa4 Per Arts EH ST2

Week B

	MonB	TueB	WedB	ThuB	FriB
1	79G Period 1 FXO F06	79G Period 1 FXO F06	79G Period 1 FXO F06	79G Period 1 FXO F06	79G Period 1 FXO F06
2A	7n/En4 English LXR G08	7n/Te1b Design & Tech LS M04	7n/Ma4 Mathematics CD M06	7n/Es4 Espanol SAG L09	7n/Ar4 Art and Design PC A1
2B	7n/En4 English LXR G08	7n/Te1b Design & Tech LS M04	7n/Ma4 Mathematics CD M06	7n/Es4 Espanol SAG L09	7n/Ar4 Art and Design PC A1
3A	7n/Re4 R.E. MPW H14	7n/Sc4 Science HN S15	7n/Pe1 P.E. BB SP5	7n/En4 English AP F02	7n/Mu4 Music TK MU2
3B	7n/Re4 R.E. MPW H14	7n/Sc4 Science HN S15	7n/Pe1 P.E. BB SP5	7n/En4 English AP F02	7n/Mu4 Music TK MU2
4A	7n/Ma4 Mathematics CD M06	7n/Fr4 French DE L04	7n/Hi4 History RB F12	7n/Gg4 Geography RF H10	7n/Sc4 Science HN S15
4B	7n/Ma4 Mathematics CD M06	7n/Fr4 French DE L04	7n/Hi4 History RB F12	7n/Gg4 Geography RF H10	7n/Sc4 Science HN S15

Can you find any lessons that are not taught in their own faculty area?

Look at Week B, Tuesday Period 2. When you get your timetable, always check the rooms and it is worth writing on your timetable if it is in another faculty area. So whilst this lesson is a Design and Technology lesson, which faculty area is it being taught in?