

Where is the canteen? What does it look like?

Frequently Asked Questions

Welcome to our canteen.
It can also be referred to as
our dining hall.

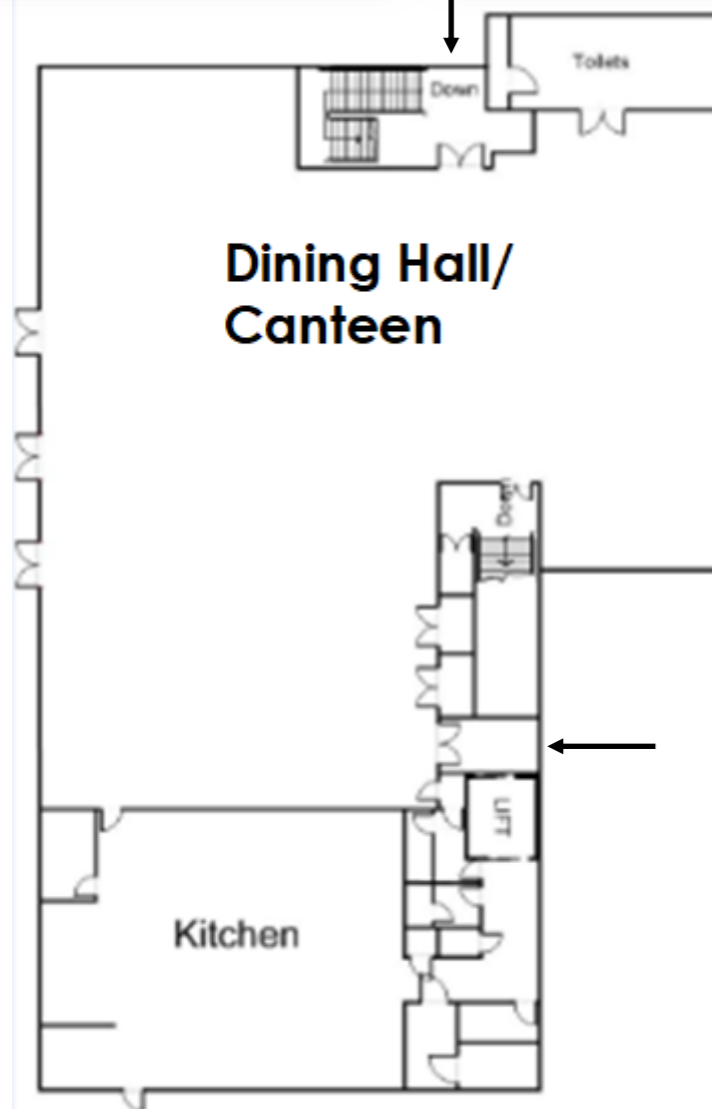
As you can see, it is a great
place for you to come and
have your breakfast, break or
lunch.

We will give more details about
this space including menus
and payment later.



Shoeburyness High School

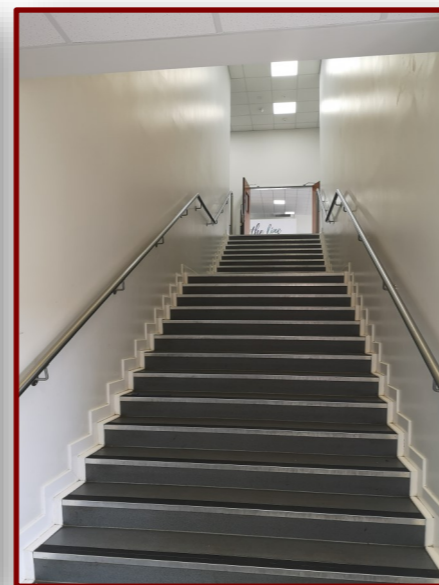
Transition Tasters



If you take a look at your map, you will see it is on our first floor.

Using the ground floor map and also Stage 3 of 'How will I find my way around the school?', can you answer these questions?

1. Which faculty is directly under the canteen?
2. Which faculty is to the left of the building?
3. Which subject is also to the left of the building?
4. Which faculty is directly to the right of the building?
5. If you had English in F06 period 3 and you wanted to spend your lunch in the canteen, which route would you take to get there?
6. If you had Theatre Arts in Studio 3 and you wanted to spend your break in the canteen, which route would you take to get there?



Here are the answers. How did you get on?

1. Maths
2. Modern Foreign Languages
3. Music
4. Design and Technology
5. Go down the stairs in the Singleton Centre so that you are on the ground floor. You have two options. You can either go out of the Singleton Centre by G4 and G7 and walk along the back service road, past the boiler house. You can also walk down the corridor past the Science Faculty, A3/A4/T10 and exit the doors by T11.
6. You could take the same routes as above as you could go into the Singleton Centre using the corridors by the toilets. You could also walk along the long corridor past the Wendy Owen Hall, Gym, IT1 and LSA office and exit using the door by BR2. You would then walk outside around the BR rooms.

There are alternative routes and the more confident you become, you will find yourself weaving around our school in no time. You may already have found another way.

Remember you can add anything you like to your map if it helps you. You may want to put arrows in the corridors in the direction of the canteen.